

Fetal Mortality

TITLE V INDICATOR TEMPLATE

INDICATOR: Fetal Mortality Rate

DEFINITION: The number of fetal deaths occurring at 20 weeks or more gestation per 1,000 live births plus fetal deaths

NUMERATOR: The number of fetal deaths occurring at 20 weeks or more gestation, by place of residence, in a calendar year

DENOMINATOR: The total number of live births plus fetal deaths, by place of residence, in a calendar year

HEALTHY PEOPLE 2010 OBJECTIVE:

Reduce the fetal death rate (20 or more weeks of gestation) to no more than 4.1 per 1,000 live births plus fetal deaths. (Baseline: 6.8 per 1,000 live births plus fetal deaths in 1997) (Objective 16-1a)

RISK FACTORS:

Race/ethnicity (African American); maternal diabetes; pregnancy complications; maternal medical complications/chronic illness during pregnancy (including severe maternal infection); Rh sensitization; congenital anomalies; intrauterine cocaine exposure; maternal history of miscarriage

Year	California				Los Angeles County			
	Fetal Mortality		95 % Confidence Interval		Fetal Mortality		95 % Confidence Interval	
	Deaths	Rate	Lower	Upper	Deaths	Rate	Lower	Upper
1999	2,700	5.2	5.0	5.4	801	5.1	4.8	5.5
2000	2,817	5.3	5.1	5.5	864	5.5	5.1	5.8
2001	2,709	5.1	4.9	5.3	784	5.1	4.7	5.4
2002	2,647	5.0	4.8	5.2	740	4.9	4.5	5.2
2003	2,701	5.0	4.8	5.2	756	4.9	4.6	5.3
2004	2,654	4.8	4.7	5.0	708	4.7	4.3	5.0
2005	2,788	5.1	4.9	5.2	790	5.2	4.9	5.6
2006	2,779	4.9	4.7	5.1	759	5.0	4.6	5.3
2007	2,632	4.6	4.5	4.8	753	4.9	4.6	5.3
2008	2,559	4.6	4.4	4.8	733	4.9	4.6	5.3

Denominator: Total Births		
Year	California	LA County
1999	520,773	156,954
2000	534,102	158,255
2001	530,080	154,307
2002	531,892	151,907
2003	543,528	152,948
2004	547,339	152,212
2005	551,488	151,167
2006	564,936	152,596
2007	568,769	152,566
2008	554,126	148,417

Note: Total Births = Live Births + Fetal Deaths.

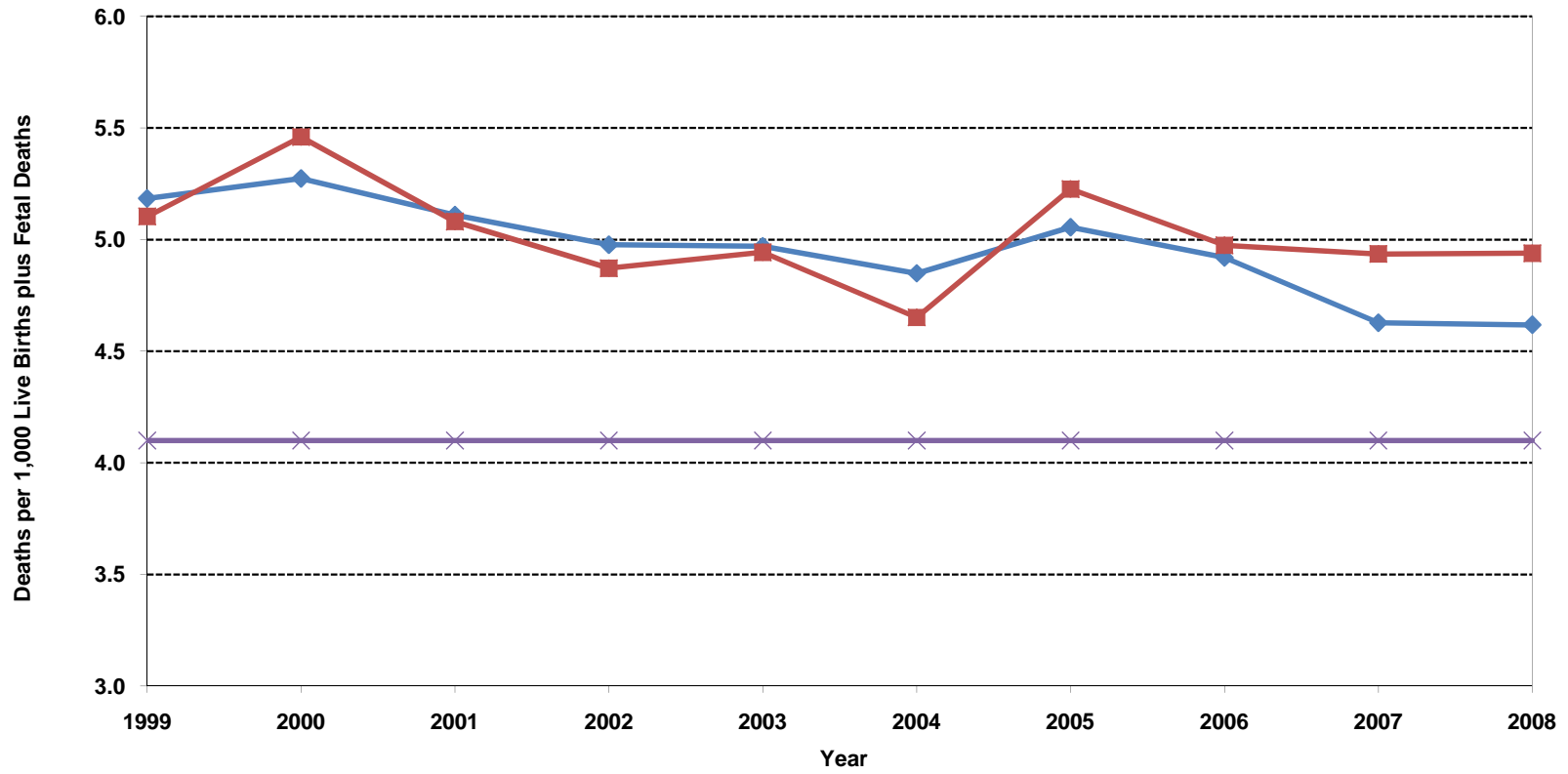
For numbers of fetal deaths in California and Los Angeles County, records with missing gestational age are excluded. (244 & 87 respectively in 2008)

Gestation is calculated from reported date of last menses.

Source: California Department of Public Health, Center for Health Statistics, OHIR Vital Statistics Section, 1999-2008.

**Fetal Deaths per 1,000 Live Births plus Fetal Deaths
California vs. Los Angeles County, 1999-2008**

◆ California
 ■ Los Angeles County
 × Healthy People 2010

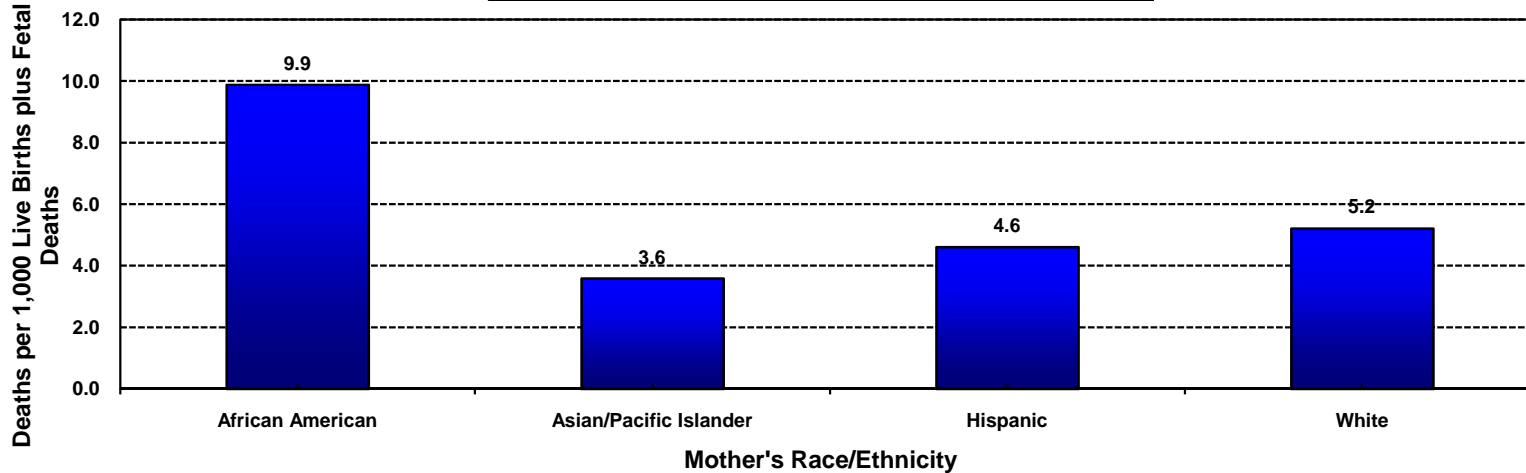


Year 2010 Objective: Reduce fetal mortality (20 or more weeks of gestation) rate to no more than 4.1 per 1,000 live births plus fetal deaths.

Note: For numbers of fetal deaths in California and Los Angeles County, records with missing gestational age are excluded. (244 & 87 respectively in 2008)
Gestation is calculated from reported date of last menses.

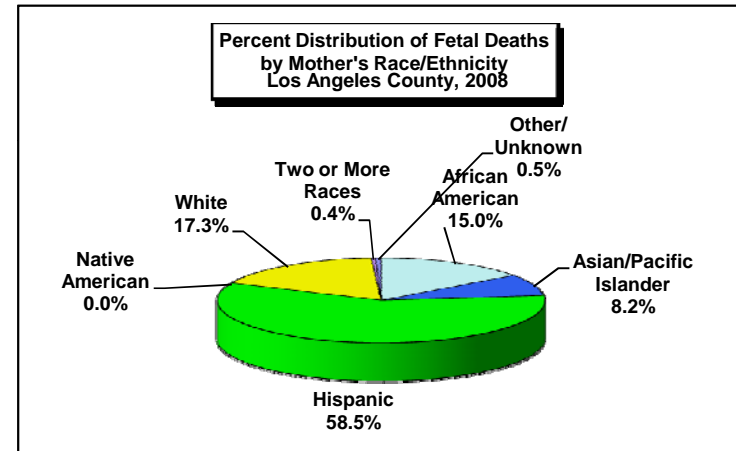
Source: California Department of Public Health, Center for Health Statistics, OHIR Vital Statistics Section, 1999-2008.

Fetal Mortality Rate by Mother's Race/Ethnicity Los Angeles County, 2008



Los Angeles County, 2008				
Mother's Race/Ethnicity	Fetal Mortality		95% Confidence Interval	
	Deaths	Rate	Lower	Upper
African American	110	9.9	8.0	11.7
Asian/Pacific Islander	60	3.6	2.7	4.5
Hispanic	429	4.6	4.2	5.0
Native American	<5	N/C	N/C	N/C
White	127	5.2	4.3	6.1
Two or More Races	<5	N/C	N/C	N/C
Other/ Unknown	<5	N/C	N/C	N/C
Total	733	4.9	4.6	5.3

Total Live Births plus Fetal Deaths
11,126
16,727
93,072
170
24,365
1,750
1,207
148,417



Year 2010 Objective: Reduce fetal mortality (20 or more weeks of gestation) rate to no more than 4.1 per 1,000 live births plus fetal deaths.

Note: Fetal mortality rate is defined as deaths occurring at 20 weeks or more gestation per 1,000 live births plus fetal deaths.

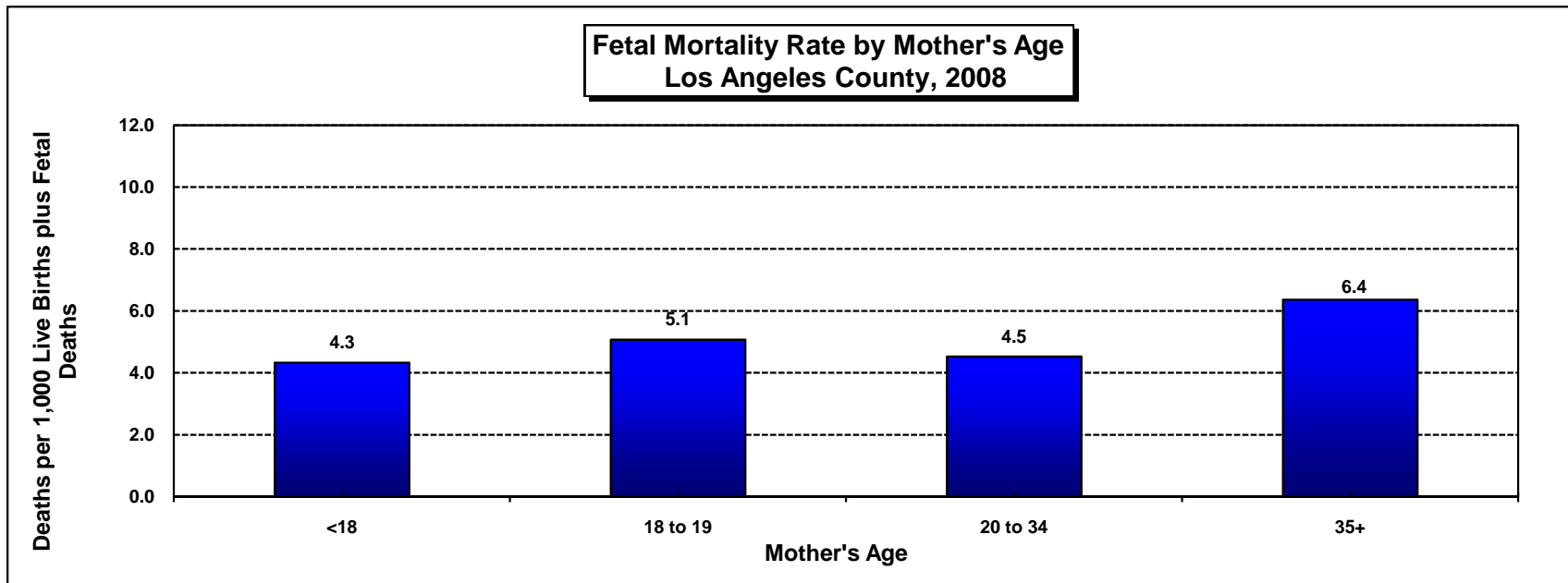
Gestation is calculated from reported date of last menses. Records with missing gestational age are excluded. (n=87)

Racial/ethnic categorization has been revised in this report; data from previous year reports may not be comparable.

African American, Asian/Pacific Islander, Native American, White and other races exclude Hispanic ethnicity. Hispanic includes any race category.

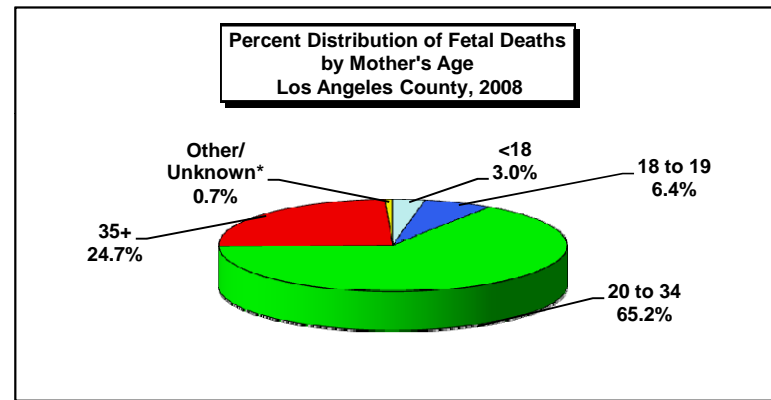
Numbers fewer than 5 are shown as "<5". Rates are not calculated (N/C) if number is fewer than five.

Source: California Department of Public Health, Center for Health Statistics, OHIR Vital Statistics Section, 2008.



Los Angeles County, 2008				
Mother's Age	Fetal Mortality		95% Confidence Interval	
	Deaths	Rate	Lower	Upper
<18	22	4.3	2.5	6.1
18 to 19	47	5.1	3.6	6.5
20 to 34	478	4.5	4.1	4.9
35+	181	6.4	5.4	7.3
Other/ Unknown*	5	N/C	N/C	N/C
Total	733	4.9	4.6	5.3

Total Live Births plus Fetal Deaths
5,077
9,270
105,617
28,433
20
148,417



Year 2010 Objective: Reduce fetal mortality (20 or more weeks of gestation) rate to no more than 4.1 per 1,000 live births plus fetal deaths.

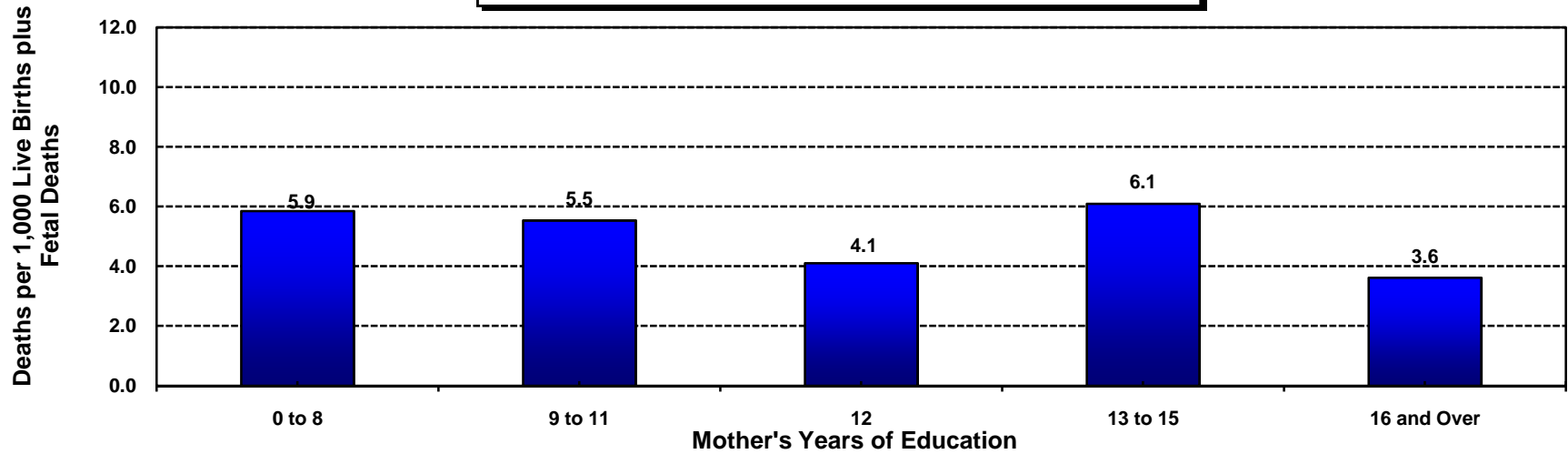
Note: Fetal mortality rate is defined as deaths occurring at 20 weeks or more gestation per 1,000 live births plus fetal deaths.

Gestation is calculated from reported date of last menses. Records with missing gestational age are excluded. (n=87)

* Rates are not calculated due to small number in the denominator.

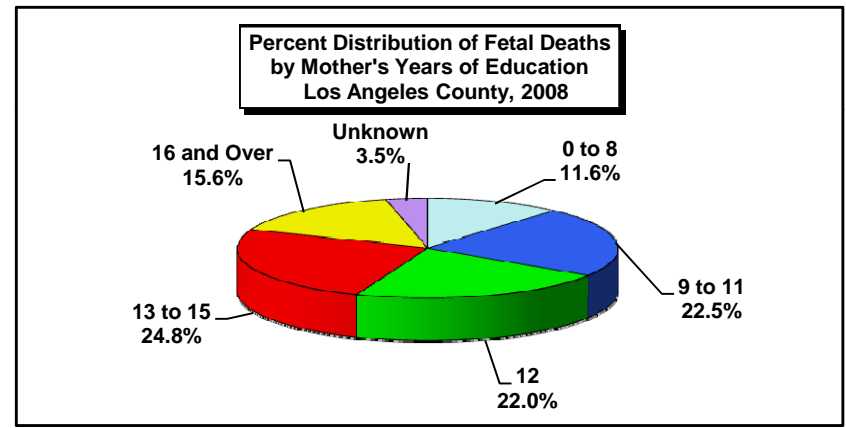
Source: California Department of Public Health, Center for Health Statistics, OHIR Vital Statistics Section, 2008.

Fetal Mortality Rate by Mother's Years of Education Los Angeles County, 2008



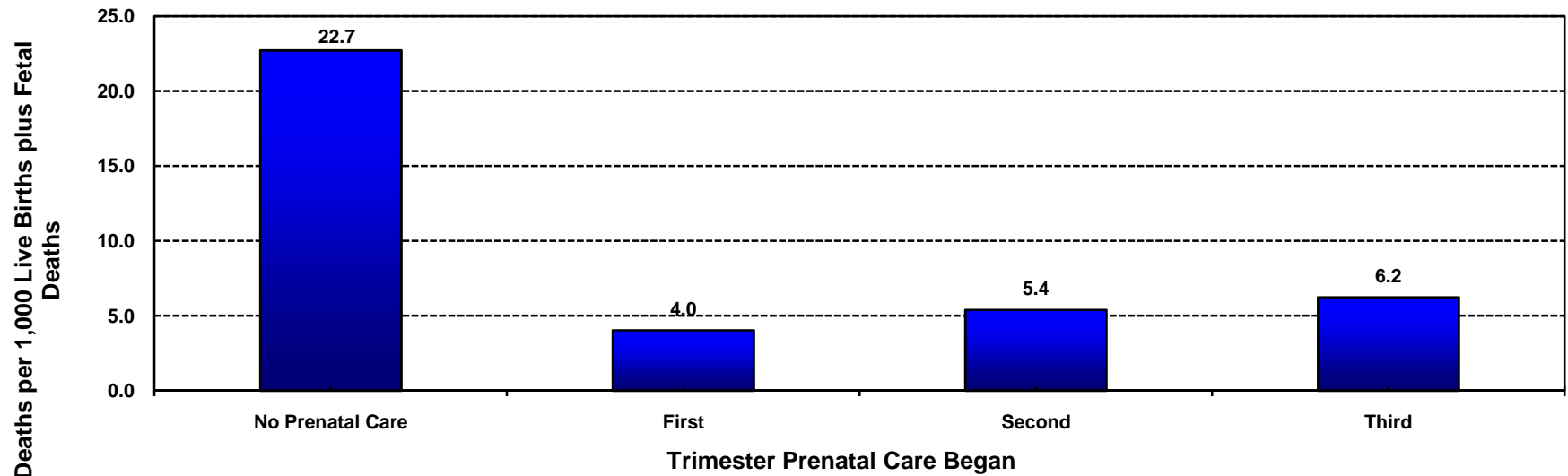
Los Angeles County, 2008				
Mother's Years of Education	Fetal Mortality		95% Confidence Interval	
	Deaths	Rate	Lower	Upper
0 to 8	85	5.9	5.0	6.7
9 to 11	165	5.5	4.9	6.1
12	161	4.1	3.7	4.6
13 to 15	182	6.1	5.5	6.7
16 and Over	114	3.6	3.1	4.1
Unknown	26	7.4	5.4	9.4
Total	733	4.9	4.7	5.2

Total Live Births plus Fetal Deaths
14,528
29,804
39,217
29,851
31,500
3,517
148,417



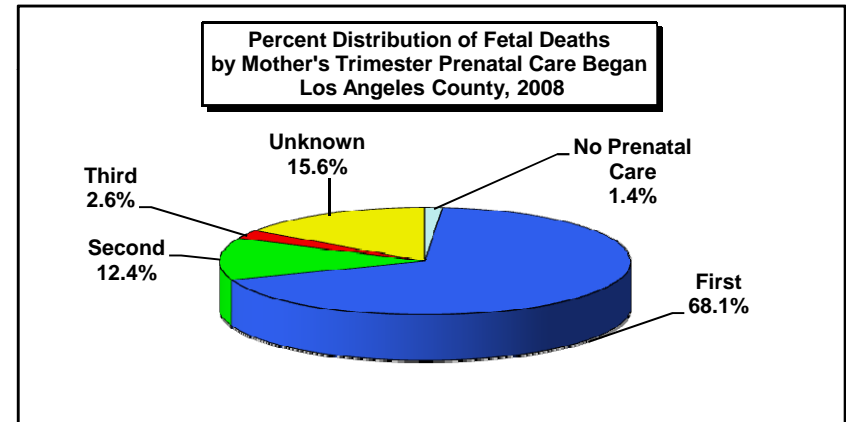
Year 2010 Objective: Reduce fetal mortality (20 or more weeks of gestation) rate to no more than 4.1 per 1,000 live births plus fetal deaths.
 Note: Fetal mortality rate is defined as deaths occurring at 20 weeks or more gestation per 1,000 live births plus fetal deaths. Gestation is calculated from reported date of last menses. Records with missing gestational age are excluded. (n=87)
 Source: California Department of Public Health, Center for Health Statistics, OHIR Vital Statistics Section, 2008.

**Fetal Mortality Rate by Mother's Trimester Prenatal Care (PNC) Began
Los Angeles County, 2008**



Los Angeles County, 2008				
Mother's Trimester Prenatal Care Began	Fetal Mortality		95% Confidence Interval	
	Deaths	Rate	Lower	Upper
No Prenatal Care	10	22.7	12.8	32.6
First	499	4.0	3.8	4.3
Second	91	5.4	4.6	6.2
Third	19	6.2	4.3	8.2
Unknown	114	26.5	23.1	29.9
Total	733	4.9	4.7	5.2

Total Live Births plus Fetal Deaths
440
123,750
16,882
3,043
4,302
148,417



Year 2010 Objective: Reduce fetal mortality (20 or more weeks of gestation) rate to no more than 4.1 per 1,000 live births plus fetal deaths.

Note: Fetal mortality rate is defined as deaths occurring at 20 weeks or more gestation per 1,000 live births plus fetal deaths.

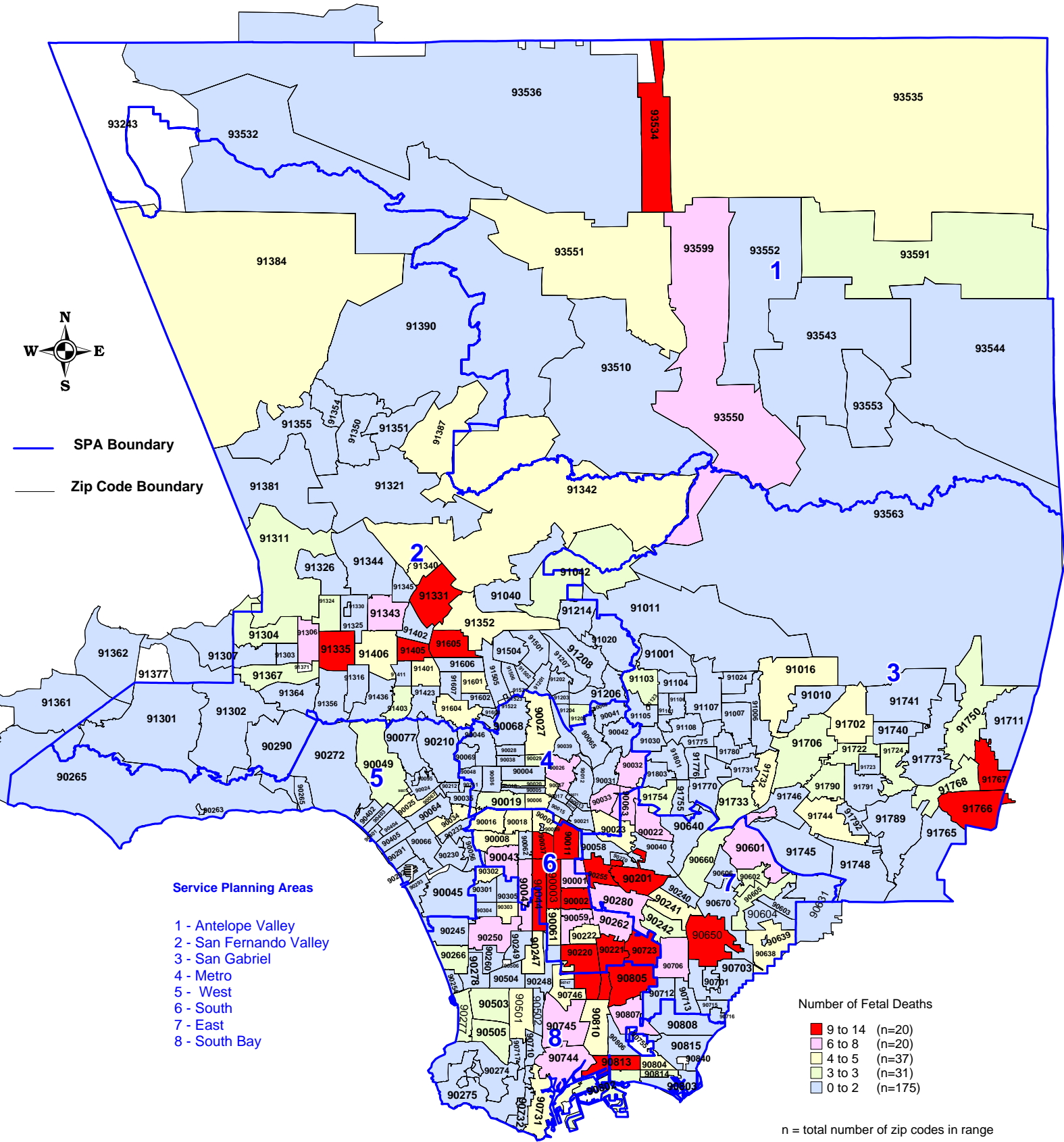
Gestation is calculated from reported date of last menses. Records with missing gestational age are excluded. (n=87)

"Trimester Prenatal Care (PNC) Began" excludes the prenatal care experiences of all women whose pregnancies did not result in a live birth.

Source: California Department of Public Health, Center for Health Statistics, OHIR Vital Statistics Section, 2008.

Number of Fetal Deaths by Zip Code* and Service Planning Area (SPA)

Los Angeles County, 2008



* Los Angeles County zip code boundaries as of April 2007

Total number of live births in Los Angeles County, 2008 = 147,684

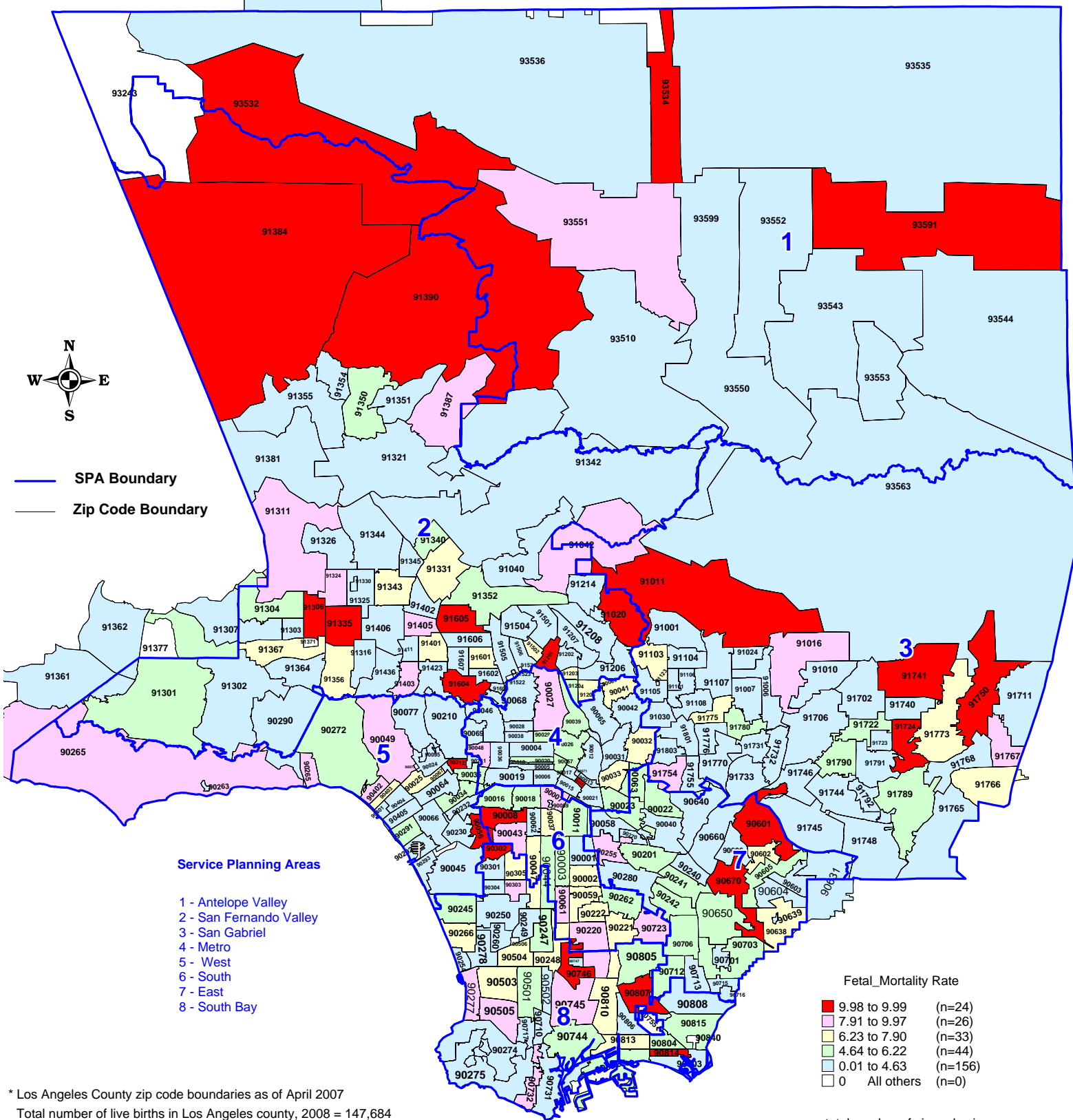
Total number of fetal deaths in Los Angeles County, 2008 = 733

Note : Fetal death is defined as deaths occurring at 20 weeks or more gestation

Source : California Department of Public Health, Center for Health Statistics, OHIR Vital Statistics Section, 2008

Fetal Mortality Rate by Zip Code* and Service Planning Area (SPA)

Los Angeles County, 2008



* Los Angeles County zip code boundaries as of April 2007
Total number of live births in Los Angeles county, 2008 = 147,684

Fetal Mortality Rate in Los Angeles County, 2008 = 4.9 per 1,000 live births plus fetal deaths

Note: Fetal mortality rate is defined as deaths occurring at 20 weeks or more gestation per 1,000 live births plus fetal deaths

HP 2010 Objective : Reduce the fetal death rate (20 or more weeks of gestation) to no more than 4.1 per 1,000 live births plus fetal deaths

n = total number of zip codes in range