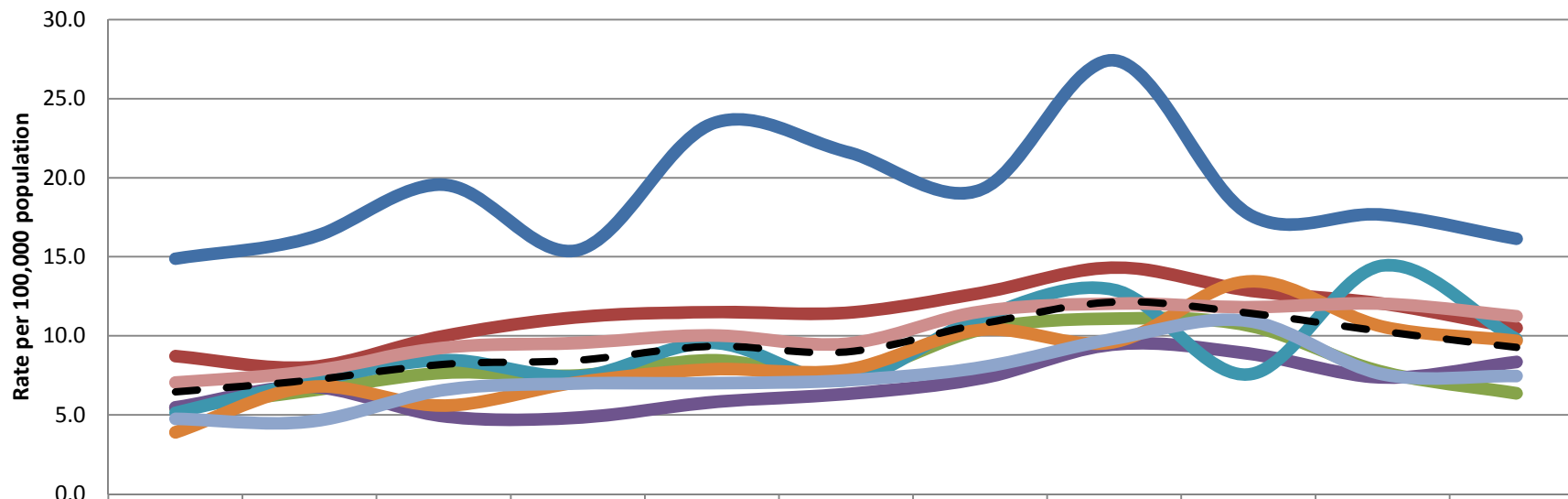


## Rate of Non Fatal Hospitalizations for Unintentional MV Motorcyclist Injuries, by SPA of Residence and Year



	2000	2001	2002	2003	2004	2005	2006	2007	2008	2009	2010
SPA 1	14.9	16.2	19.6	15.4	23.4	21.7	19.2	27.4	17.7	17.7	16.1
SPA 2	8.7	8.0	10.0	11.2	11.5	11.5	12.7	14.3	12.9	12.0	10.5
SPA 3	5.4	6.5	7.7	7.5	8.5	7.5	10.4	11.1	10.7	7.7	6.4
SPA 4	5.5	6.8	4.9	4.8	5.8	6.3	7.3	9.5	8.9	7.4	8.4
SPA 5	5.1	7.1	8.5	7.4	9.6	7.2	11.2	12.9	7.6	14.5	9.8
SPA 6	3.9	6.8	5.6	7.1	7.9	7.9	10.4	9.6	13.5	10.6	9.7
SPA 7	4.8	4.6	6.6	7.0	7.0	7.2	8.0	9.8	10.9	7.6	7.5
SPA 8	7.1	7.8	9.3	9.6	10.0	9.5	11.5	12.0	11.8	12.0	11.2
LAC Overall	6.5	7.2	8.2	8.5	9.3	9.0	10.7	12.1	11.4	10.3	9.3

— SPA 1   
 — SPA 2   
 — SPA 3   
 — SPA 4   
 — SPA 5   
 — SPA 6   
 — SPA 7   
 — SPA 8   
 - - - LAC Overall

Suggested Citation: Los Angeles Department of Public Health, Injury & Violence Prevention Program (May 2011). Rate of Non Fatal Hospitalizations for Unintentional MV Motorcyclist Injuries, by SPA of Residence and Year [online data table]. [cited Year Month (abbreviated) Day] from [www.ph.lacounty.gov/ivpp](http://www.ph.lacounty.gov/ivpp)

Data Sources: Office of Statewide Health Planning and Development, Hospital Discharge Data

Population Estimates & Predictions (PEPS) Data, Los Angeles County Office of Urban Research

Note: In some tables/charts values for some SPAs and years are suppressed because of small numbers.