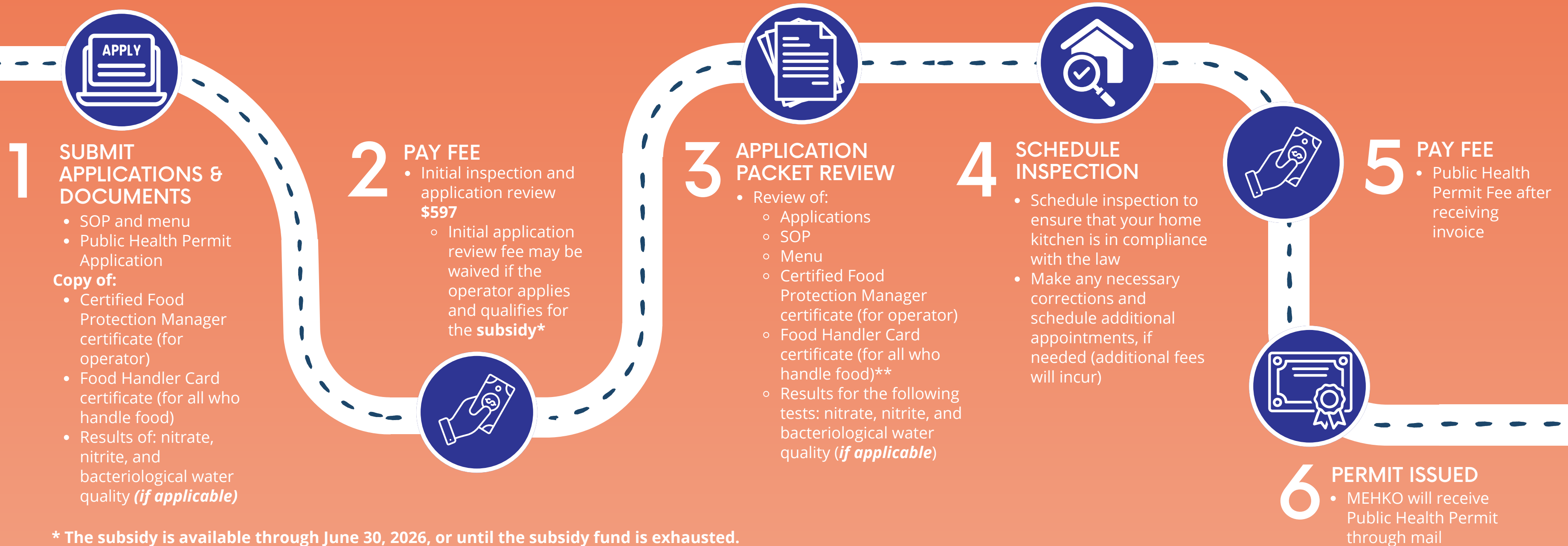




MICROENTERPRISE HOME KITCHEN OPERATION (MEHKO) PROCESS



* The subsidy is available through June 30, 2026, or until the subsidy fund is exhausted.

**Submit food handler cards for persons involved within 30 days of hire.

SUBMIT TO: **HOMEBASED FOOD OPERATIONS PROGRAM**
(626) 430-9855



COUNTY OF LOS ANGELES
Public Health